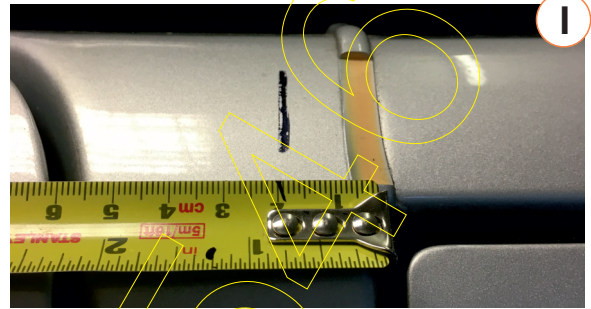


Tools Required

- Sturdy Steps or Trestle
- Metric Tape Measure
- Battery Drill/Driver with Phillips 2
- Masking Tape & Super Glue
- Stanley Knife / Blade
- Pencil or Sharpie
- PH2 Hand Screwdriver
- Skeleton/Caulking Gun
- Tube of Black Sikaflex 221 (if not supplied)
- An Assistant

Reference Pictures

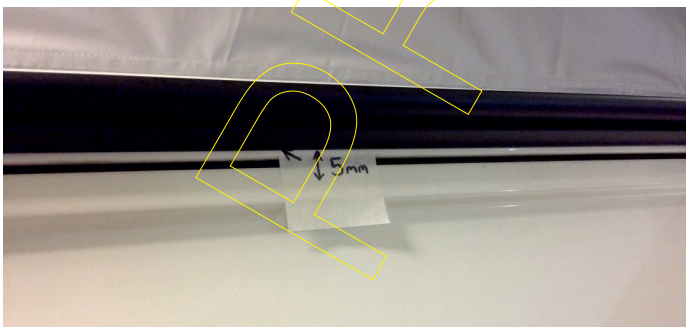


Step One

From the designated start point (front corner of sliding door) as shown in the photo (Picture 1) measure 20mm +/- 3mm forwards, towards the windscreen, and mark with a vertical pencil/pen line. This is the front start point for the main rail on all variants.

Step Two

Measure approx. 5mm above the shut line of the side loading door, you can use a pencil line or masking tape to provide a reference point. With the help of an assistant, hold the rail on the reference point and also the designated pencilled start point at the front of the van. You will need to mark with a pencil/pen and carefully cut away the sealant behind the rail that will prevent the rail sitting flush, now hold the rail back in position.



Step Three

Using the self-drilling pilot screws supplied (Silver) (Picture 2) start from the middle of the rail and work towards the windscreen, secure the rail to the van



TAKING CARE NOT TO OVER TIGHTEN - Bend the rail to the contours of the van (the Combi-Rail is made from a malleable alloy to make this process easier) When the front half is secured do the same from the middle of the rail towards the rear of the van **TAKING CARE NOT TO OVER TIGHTEN.**

Step Four

Remove all the temporary self-drilling pilot screws, and put the rail to one side. With the supplied IPO wipe, clean the

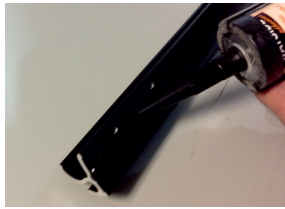


entire area thoroughly where the complete Vamoose Combi-Rail will sit, and also the back surface of the Combi-Rail itself. (Retain moist wipe for clean up afterwards) **DANGER! BEWARE OF ANY SHARP BURRS LEFT FROM THE DRILLING PROCESS.**



Step Five

Apply a bead of adhesive sealant (either supplied with DIY kit or use Sikaflex 221 if trade user) the bead should be no more than 8mm or approx pencil width, and run down the **centre** of the back of the Vamoose Combi-Rail, this correct amount will minimise any clean up after installation.



Step Six



Apply a tiny amount of the sealant over each pre-drilled hole in the van. With the help of an assistant, hold the rail in position being very careful not to smudge the sealant bead. Fix the rail into the pre-drilled holes with your PH2 **hand screwdriver** using the supplied **chemically blacked stainless steel screws**. Again, start from the middle, work towards the front, and then from the middle towards the rear. **TAKE CARE NOT TO OVERTIGHTEN THE SCREWS** the sealant is the main fixing once cured.

Step Seven

Now install the front and rear end stop, apply sealant to the back and push into place. This can be held in place with tape until cured (24 hours) or **GOOD TIP:** a small spot of quality superglue can be used to hold the end cap lug in the gutter until the sealant cures, use the IPO wipe first to degrease, superglue accelerator can be used to speed up cure time.



Step Eight

When the front and rear end stops are finally positioned, and you are happy with the appearance, mask off the surrounding area and fill in any gaps around the end stops with sealant.



Ensure that you clean off any excess sealant using the retained wipe. You can also use white spirits or panel wipe to clean off excess if you have accidentally smudged or over applied sealant. Please allow 24 hours to cure fully before attaching any awning or roof rack etc. Dispose of any unused products responsibly.



Our Vamoose rails use a standard 6mm x 6mm Kador Strip to fasten any industry standard awning to your van, we also manufacture a universal bracket to install most Fiamma wind out awnings to our Combi Rails.

NB: Some pictures used are of other marques of vehicle, these are for illustrative purposes only as the fixing methods remain the same, however the start point given in step one is specific to the vehicles listed at the top of the instructions. It is solely the installers responsibility to double check all dimensions and the fit line before drilling/screwing into the vehicles bodywork, measurements are given as a guide only.

VAMOOSE®

**Thank you for your purchase.
Did you know we also offer
fitting kits for other vehicles?**



Viola Bank, Stocksbridge, Sheffield S36 1FZ | 01226 762951 | enquiries@vamoosecamperconversions.co.uk

